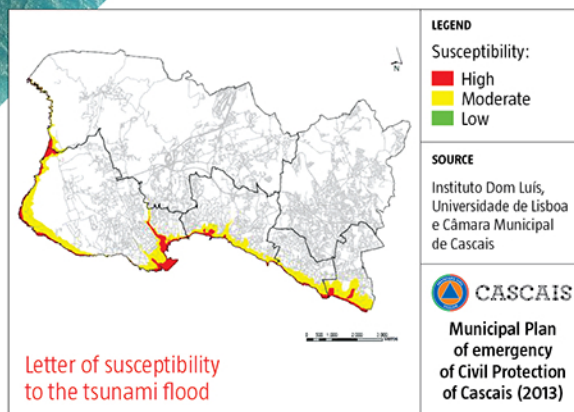


Tsunami risk areas are mapped according to degree of susceptibility.



There are potential seismic and tsunamic sources in the proximity of Cascais region.

If an earthquake with oceanic epicenter occurs, is highly likely that a tsunami will follow after an estimated time of 30 minutes. So you should take special measures immediately.

The Mayor of Cascais (the president of Cascais municipality) will insure the coordination of Civil protection operations and emergency measures regarding the mitigation of life and property losses and environmental protection as well as reestablishing minimum normal conditions.

# TSUNAMI

## WHAT TO DO

During an earthquake you should:



Any felt earthquake is a Tsunami alert

**GO TO HIGH  
GROUND**



Tsunami waves can last for hours

**KEEP IN HIGH GROUND**



### PROJECTO BAYWATCH

Parceiros

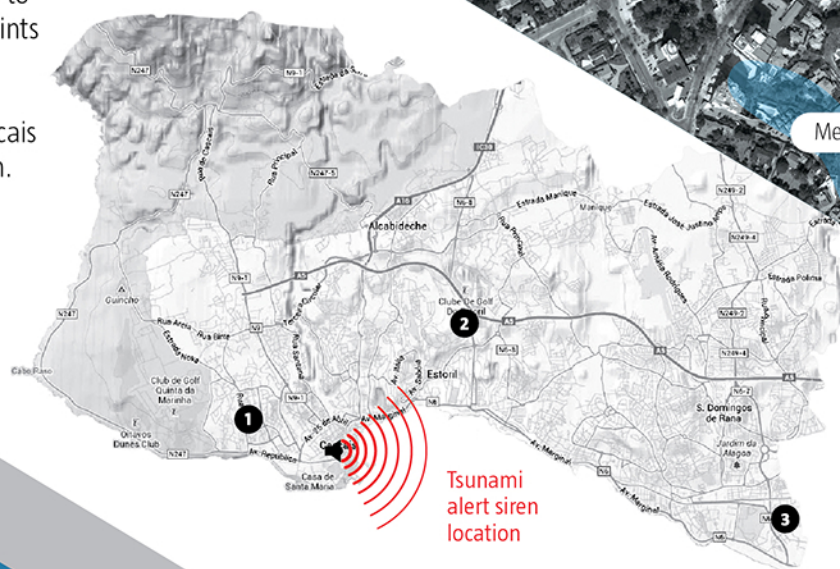


CONCELHO  
DE CASCAIS



# AFTER A MAJOR EARTHQUAKE OR A **TSUNAMI** WARNING

- ▶ You will hear a siren followed by a message.
- ▶ Keep away from the shore and go to higher ground.
- ▶ Follow the authorities directions or go to the meeting points marked on this brochure or consult the Cascais Emergency Plan.



## TO INFORM

Read more about Tsunami Risk and other Risks at:

[www.prociv.pt](http://www.prociv.pt)  
[www.cm-cascais.pt](http://www.cm-cascais.pt)  
[www.unisdr.org/campaign/resilientcities/cities/view/1420](http://www.unisdr.org/campaign/resilientcities/cities/view/1420)



**Main evacuation routes to the meeting points**

## Meeting points according to the emergency plan

- 1 Pavilhão do Dramático de Cascais**  
Estrada da Torre, 2750-748 Cascais  
Coordenadas: N 38° 70' 02.12" W 9° 44' 15.22"
- 2 Clube de Golf do Estoril**  
Av. da República, 2765-273 Estoril  
Coordenadas: N 38° 71' 87.33" W 9° 39' 55.77"
- 3 Pavilhão dos Lombos**  
Rua da Feitoria, 2775-568 Carcavelos.  
Coordenadas: N 38° 68' 79.18" W 9° 32' 55.45"



**Teatro Gil Vicente**  
Rua Gomes Freire,  
2750-362 Cascais  
Coordenadas:  
N 38° 69' 62.85" W 9° 42' 16.11"

Inundation area can reach 20 meters high as represented in this map